

AFTERCARE INSTRUCTIONS

Your fitting has a high quality finish and should be treated with care to preserve the visible surfaces.

All surface finishes will wear if not cleaned correctly, the only safe way to clean your mixer is to wipe with a soft damp cloth. Stains can be removed using washing up liquid. All bath cleaning powders and liquids will damage the surface of your fitting, even the non-scratch cleaners. **NOTE: Never use abrasive detergents or disinfectants or those containing alcohol, hydrochloric acid or phosphoric acid.**

Bristan recommend E-Cloth for cleaning all of our bathroom & kitchen products. Using just water, E-cloth gives a smear free, deep clean by breaking up and holding dirt, which normal cloths leave behind. Order through your Bristan stockist. (ORDER CODE: ECLOTH)



GUARANTEE

All products are manufactured to the highest standards and a 5 year guarantee covers any defect in manufacture.

In the interests of continuous product development we reserve the right to alter specification as necessary

PRODUCT CODE:

PRODUCT IDENTIFICATION CODE LASER ETCHED ON PRODUCT

Installer please fill in code here _____.(Where applicable)

TELEPHONE HELPLINE! +44 (0)844 701 6273

Bristan Group Limited
Birch Coppice Business Park
Dordon
Tamworth
Staffordshire
B78 1SG
UK
A Masco Company
Website: www.bristan.com
Telephone: +44 (0) 844 701 6274
Facsimile: +44 (0) 844 701 6275
Email: enquire@bristan.com

BRISTAN

Fast Fit Wall Outlet

Fitting Instructions & Contents List

Please keep these instructions for future reference and request of replacement part

This wall outlet is intended to be used in conjunction with other products, such as shower or blending valves, diverters and stopcocks from the Bristan ranges in order to create a system to suit your requirements.

COMPONENTS

- | | |
|--------------------|--------------------|
| 1. Wall Fixing Kit | 4. Copper Olive |
| 2. Wall Plate | 5. Compression Nut |
| 3. Rubber O-Ring | 6. Outlet |

INSTALLATION

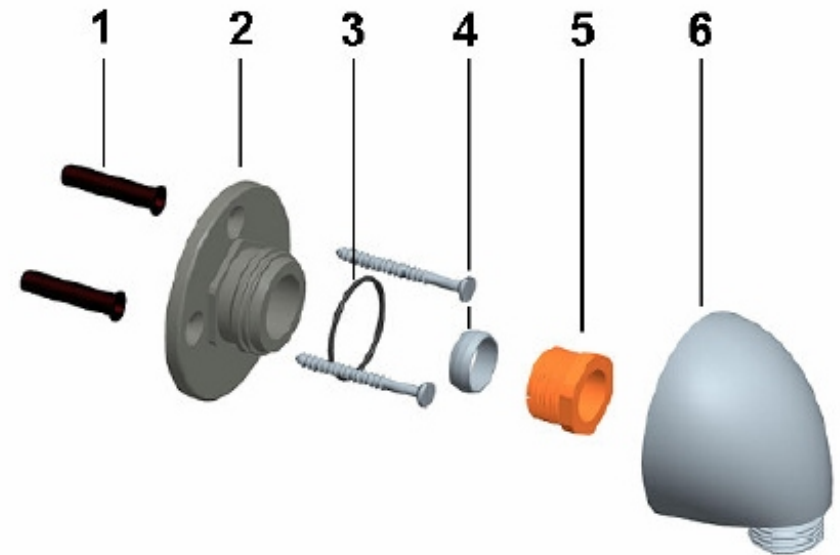
The wall outlet should be arranged in your system with a supply of mixed water. It is advised that a minimum of 30mm of copper pipe is left protruding through the wall for installation.

1. Identify all components and check for completeness, particularly before commencing installations. Ensure that all pipework / plumbing is complete to the required position for the wall outlet.

NOTE:- Before finishing wall turn on water supplies to check both correct systems function and for leaking from joints/connections.

2. Complete wall finish.
3. Slide the wall plate (2) over copper pipe. Use fixing kit (1) to secure the plate to the wall. Slide the rubber o-ring (3) over the wall plate (2) into the grooved lip.
4. Place the copper olive (4) over the protruding copper pipe. Slide the copper olive back until it fits tight against the wall plate. Slide the compression nut (5) over the copper pipe until it meets the thread on the wall plate and tighten. Grip the flats on the wall plate (2) to eliminate movement when tightening the compression nut (5).

5. Cut remaining protruding copper pipe if required. Place the outlet (6) over the wall plate (2). Tighten the grub screw, positioned under the body of the outlet (6) to fix the outlet in place.
6. See back page for aftercare instructions.



PLEASE NOTE:

In the unlikely event you find a part missing, please contact our Customer Service helpline on **0844 701 6273** for immediate dispatch of part