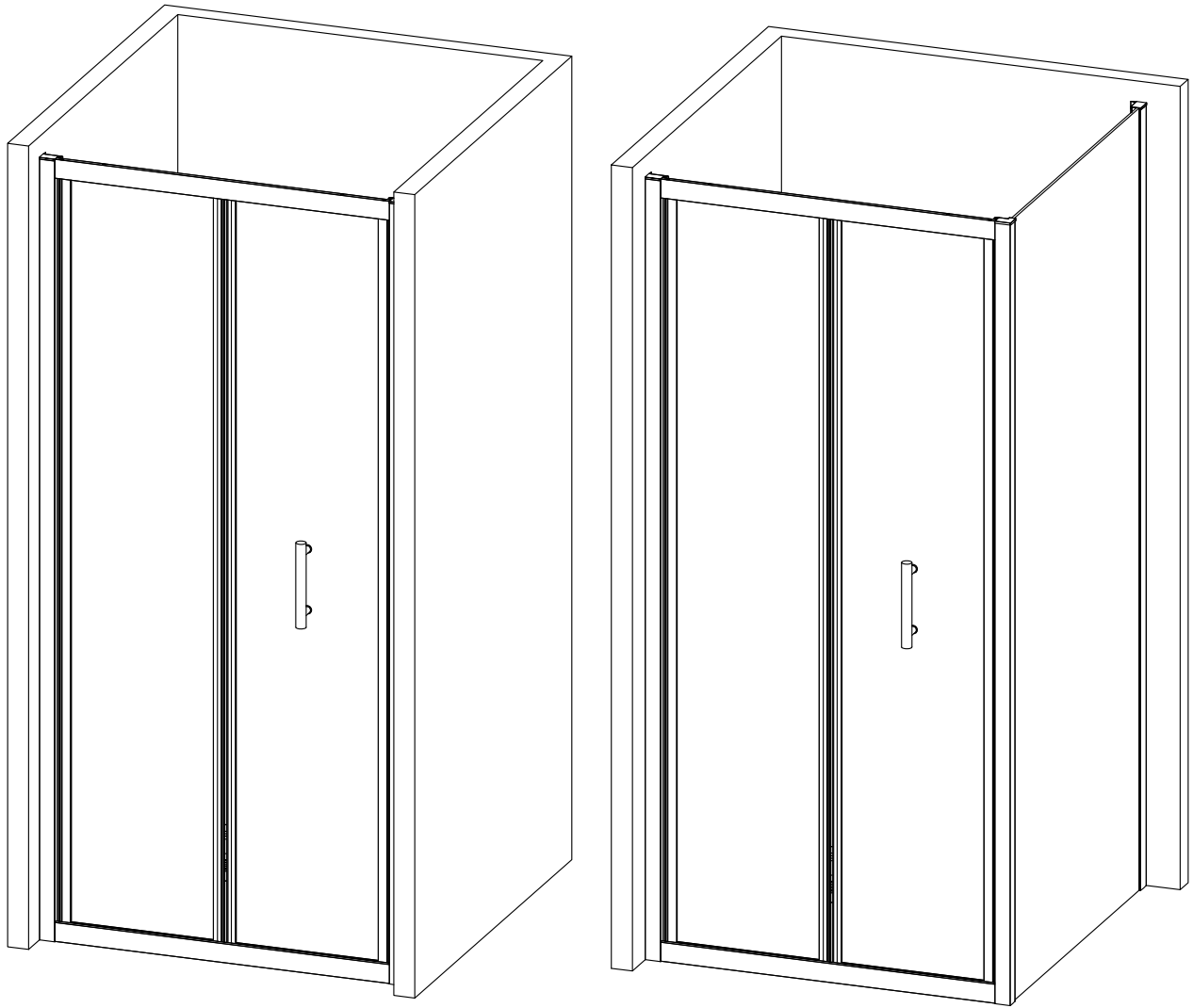


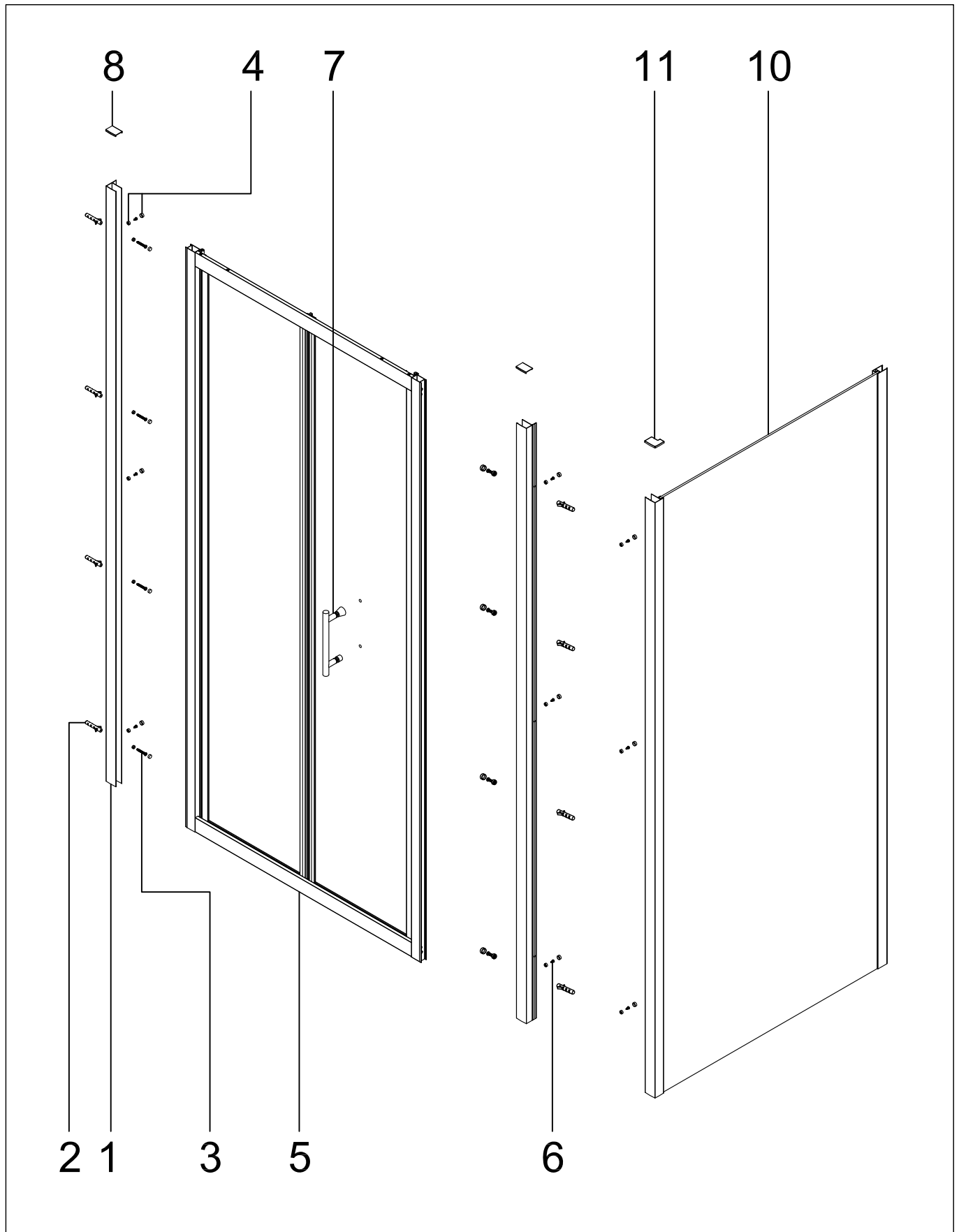
Assembly Instructions

Bi-fold Door Enclosure



Assembly Instructions





Bi-fold Door Enclosure



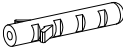
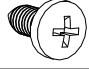


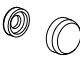
Assembly Instructions

Bi-fold Door Enclosure

Contents for Bi-fold Door Parts Supplied

Ref	Description	Illustration	Qty	Ref	Description	Illustration	Qty
1	Wall profile		2	7	Handle		1
5	Bi-fold door		1	8	Wall profile cover		1pair

Fittings Supplied


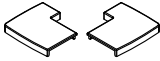
Ref	Description	Illustration	Qty	Ref	Description	Illustration	Qty
2	Wall plug		8	6	Stainless steel Screw ST4X10		6
3	Stainless steel Screw ST3.9X35		8	9	3MM Drill Bit		1
4	Screw cover cap		14				

Assembly Instructions



Bi-fold Door Enclosure

Contents for Side Panel(Sold Separately)

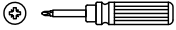
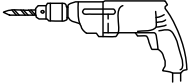

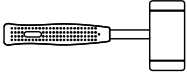
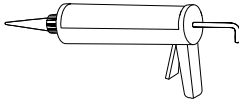
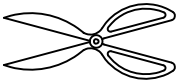


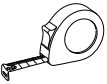

Parts Supplied

Ref	Description	Illustration	Qty	Ref	Description	Illustration	Qty
10	Side panel		1	11	Corner profile cover		1pair

Fittings Supplied

Ref	Description	Illustration	Qty	Ref	Description	Illustration	Qty
4	Screw cover cap		3	6	Stainless steel Screw ST4X10		3

Tools Required(not supplied)

Magnetic Crosshead Screwdriver		Power Drill(with hammer action)		6MM Drill Bit(suitable for wall type)	 Ø6mm
Rubber Mallet		Silicone Sealant		Scissors	
Spirit Level		Knife			
Tape Measure		Pencil			

Assembly Instructions

Bi-fold Door Enclosure

Before You Start

·**WARNING** : Please read these instructions through carefully before you start the installation. Incorrect product installation may result in serious product failure in use.

Always follow the instructions and retain them for future use.

·The enclosure is designed to allow for 20mm adjustment when fitted to “out of true” walls.

The thickness of the tiles used will affect the overall position of the enclosure on the tray.

·Check the pack and ensure that you have all of the parts listed . If not, contact your vendor.

·When you are ready to start, make sure you have the right tools to hand, plenty of space and a clean dry area for assembly.

·Two people are required for assembly. Please note that although these instructions are comprehensive, it is always recommended that a technically competent installer should undertake installation.

·Ensure that the enclosure is fitted to a level tray or floor and vertical walls .

·**Please note:** The wall plugs included with this product are suitable for solid walls only. Plasterboard or stud walls may require specialized fixings which are not provided. (Always ensure that the wall plugs or fittings are correct for the wall type.)

·**Caution:** Please handle all glass with care. Any damage to the edges, or scratches to the surface that occur during assembly or normal use can cause the glass to break suddenly. Tempered glass will shatter into very small pieces that will still have sharp edges.

·**Caution:** Care should be taken when drilling into walls to avoid hidden pipes or electrical cables.

·When working near a tray or bath, ensure that the waste is covered so that small parts do not fall down it.

Assembly Instructions

Bi-fold Door Enclosure

Assembly(recess installation)

Fig.1

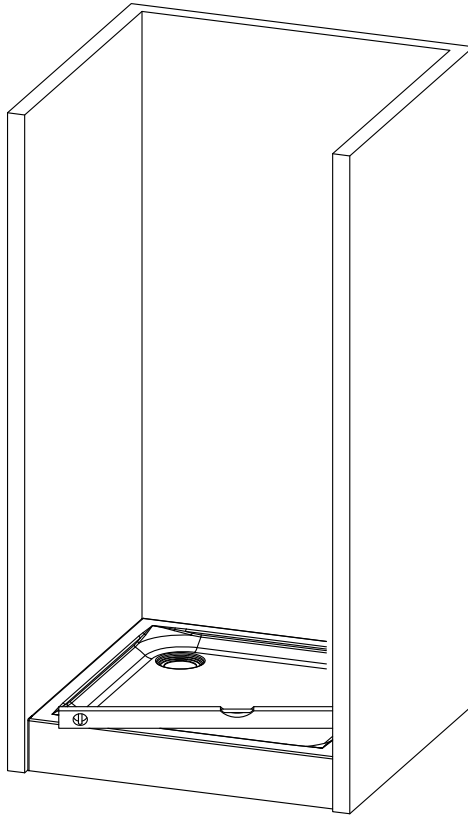
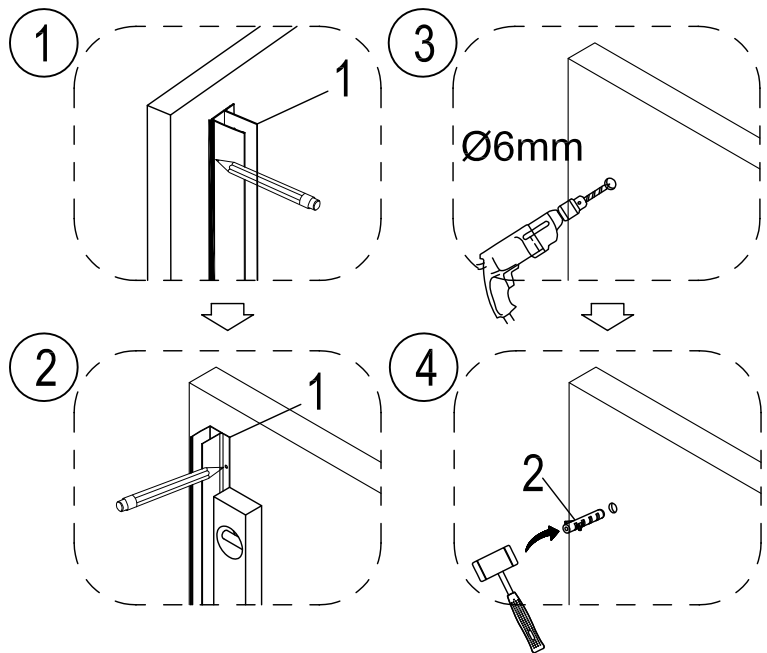
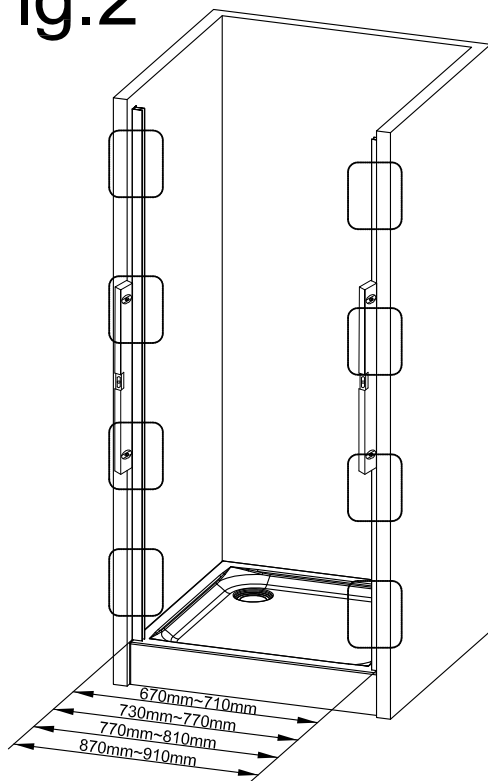


Fig.2



Assembly Instructions

Bi-fold Door Enclosure

Fig.3

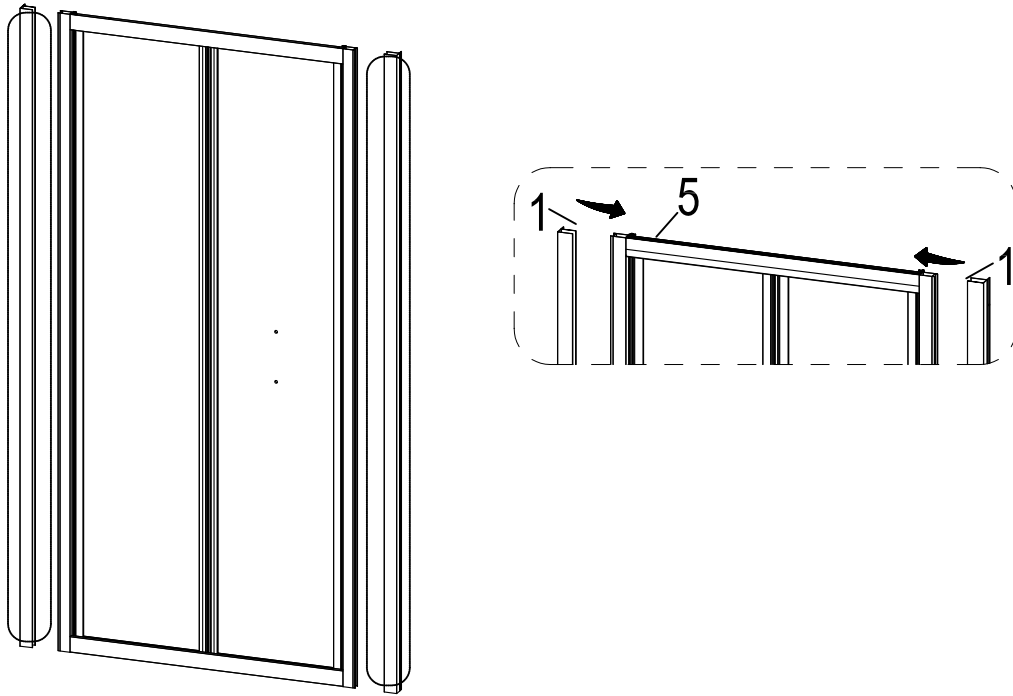
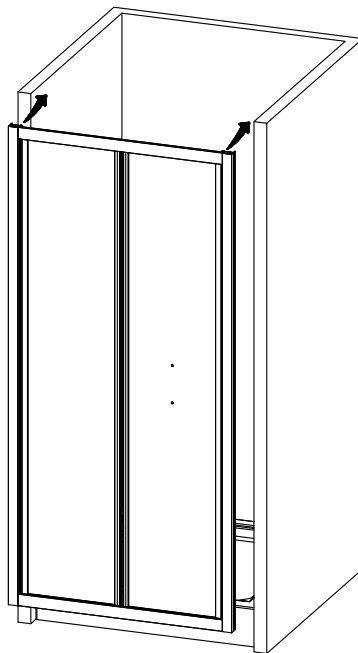


Fig.4



Assembly Instructions

Bi-fold Door Enclosure

Fig.5

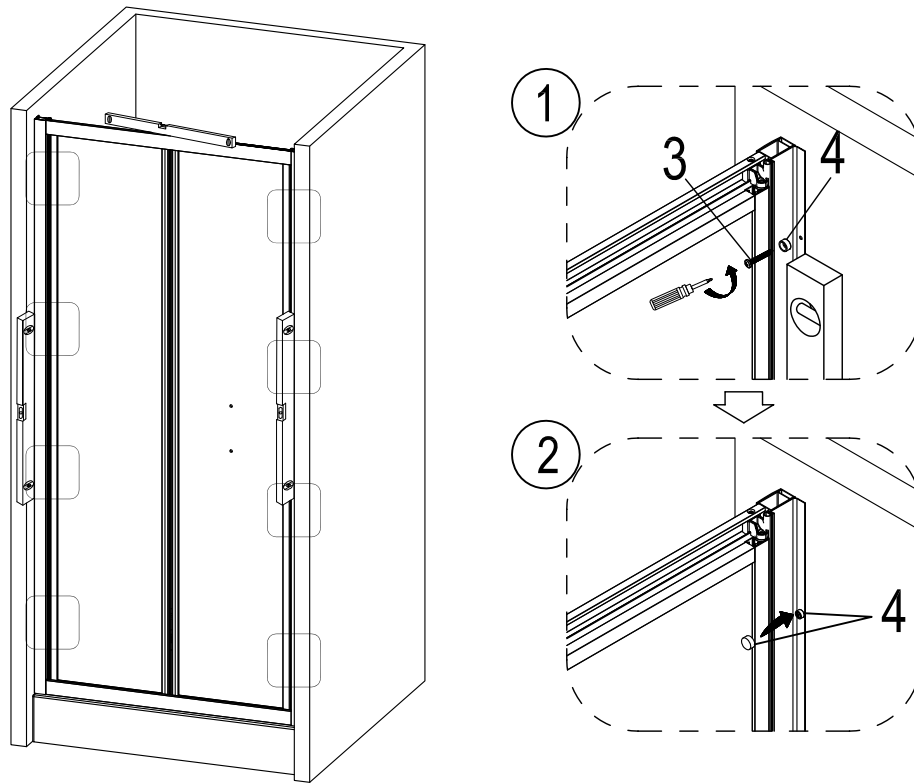
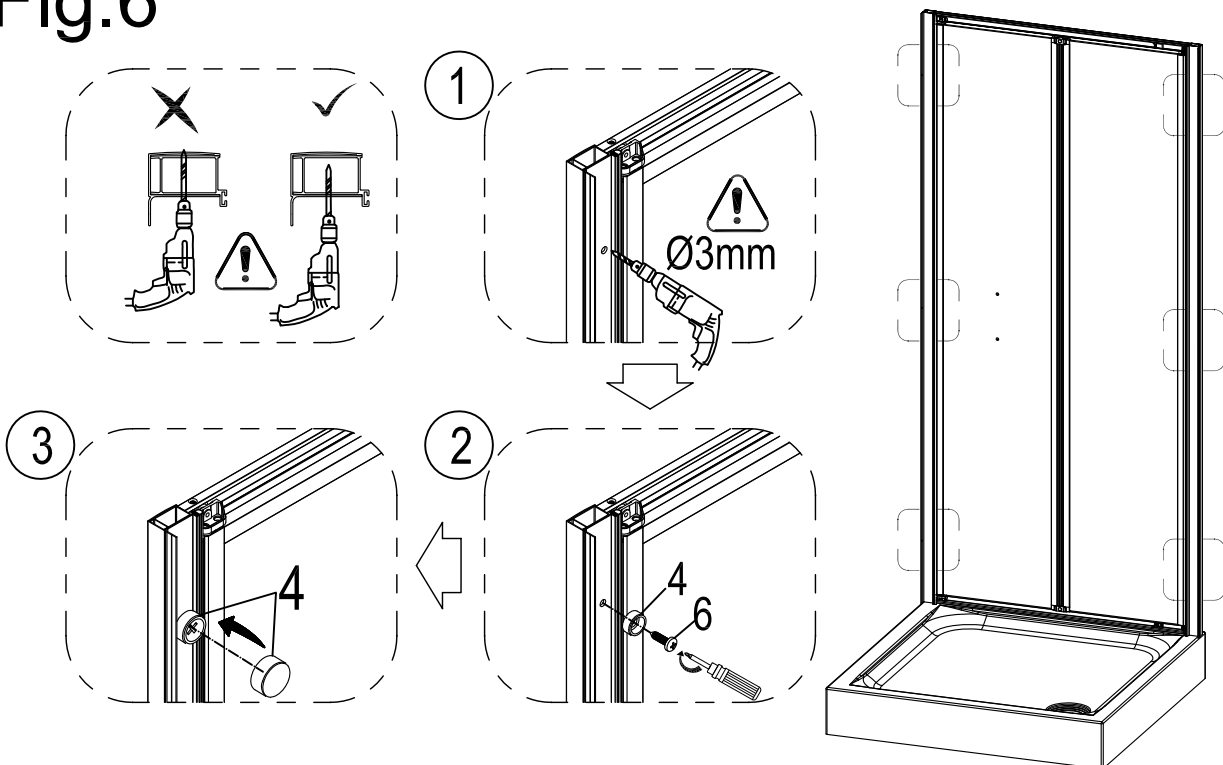


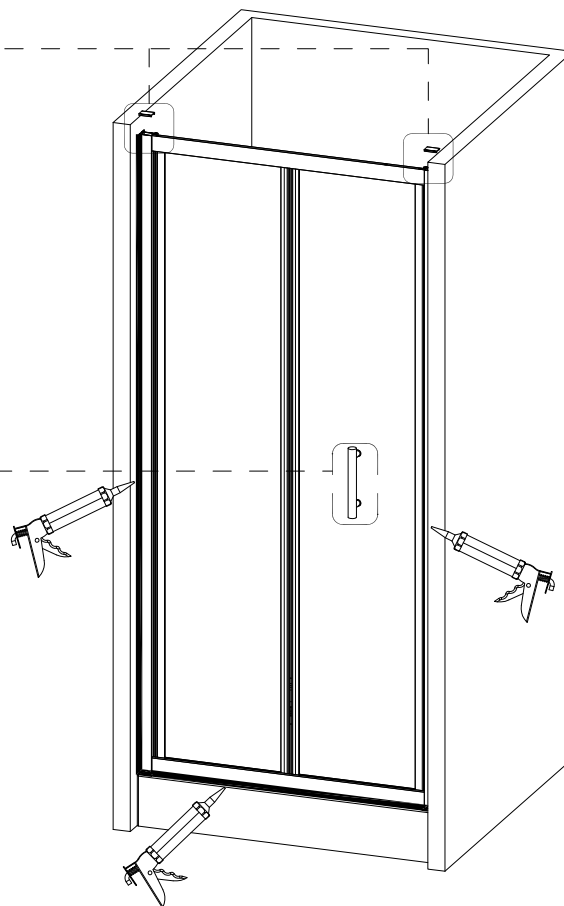
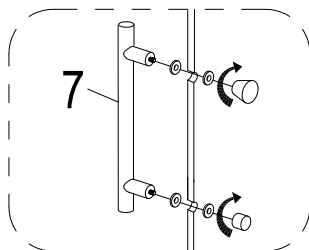
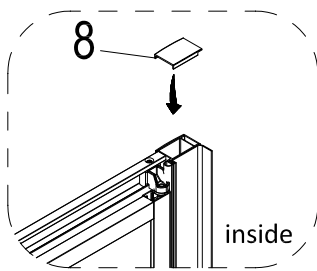
Fig.6



Assembly Instructions

Bi-fold Door Enclosure

Fig.7



Assembly Instructions

Bi-fold Door Enclosure

Assembly (Bi-fold door and side panel installation)

Fig.1

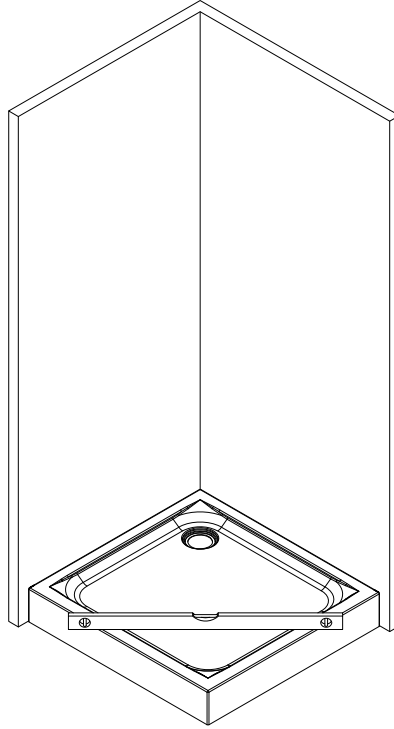
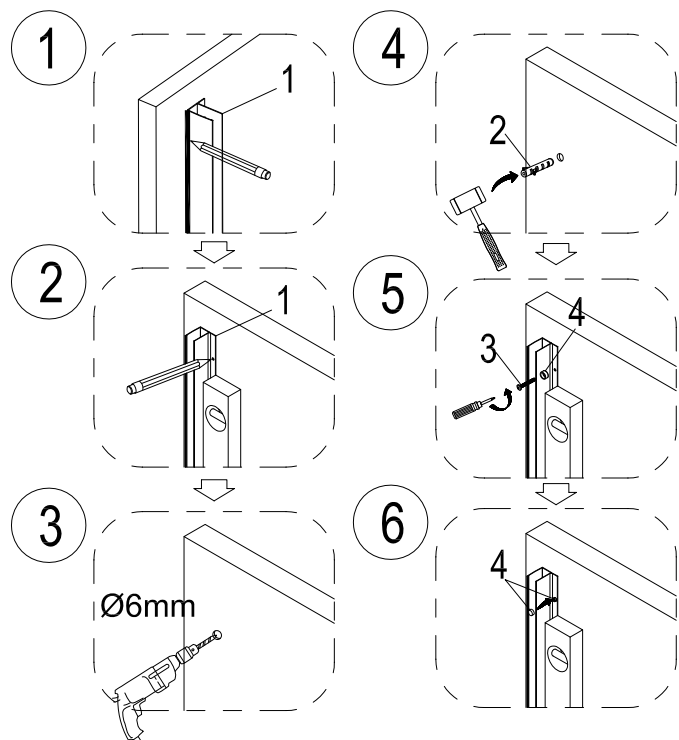
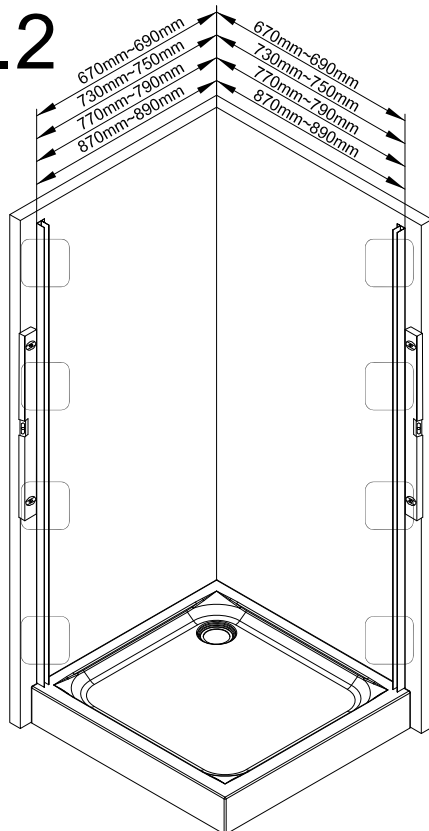


Fig.2



Assembly Instructions

Bi-fold Door Enclosure

Fig.3

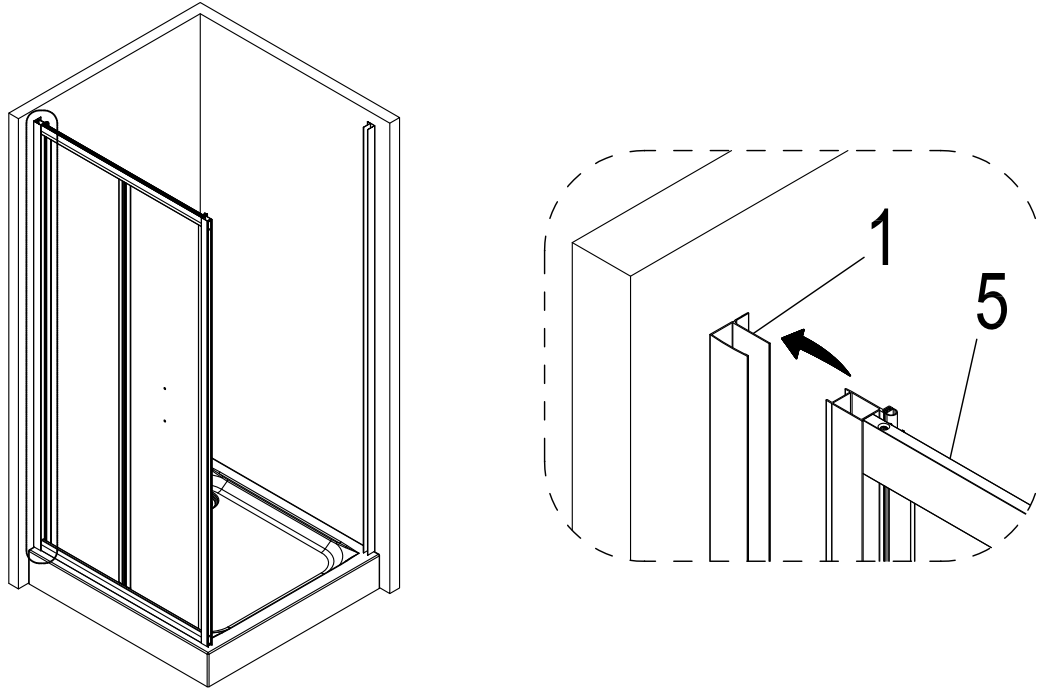
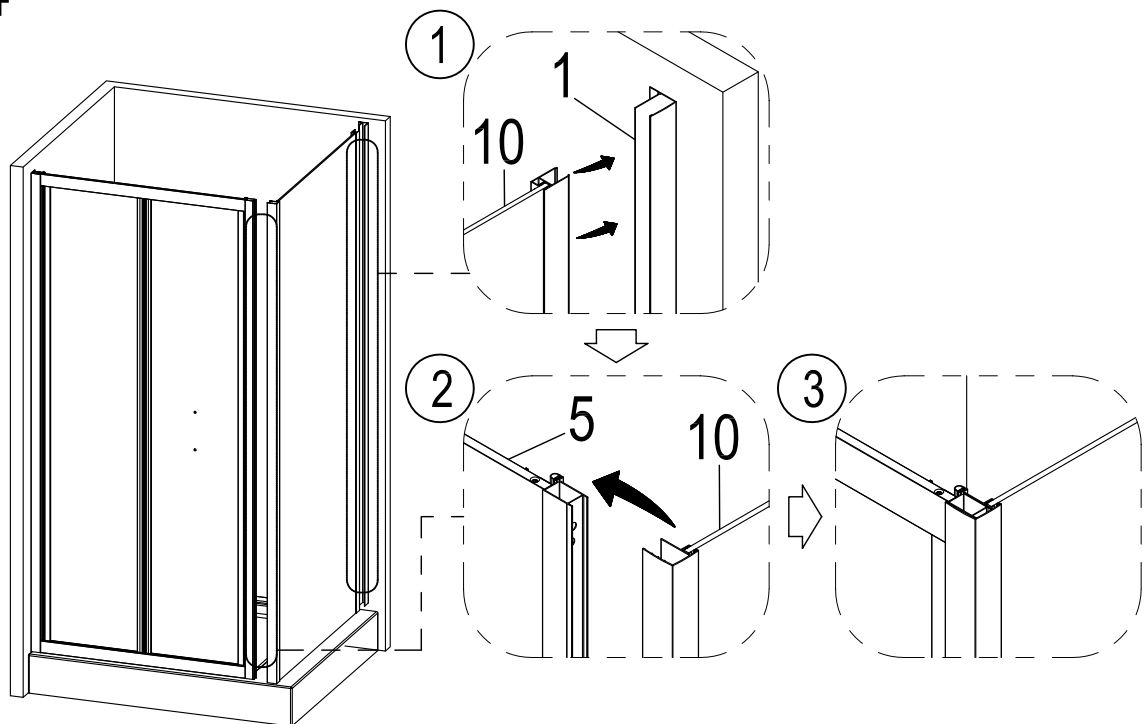


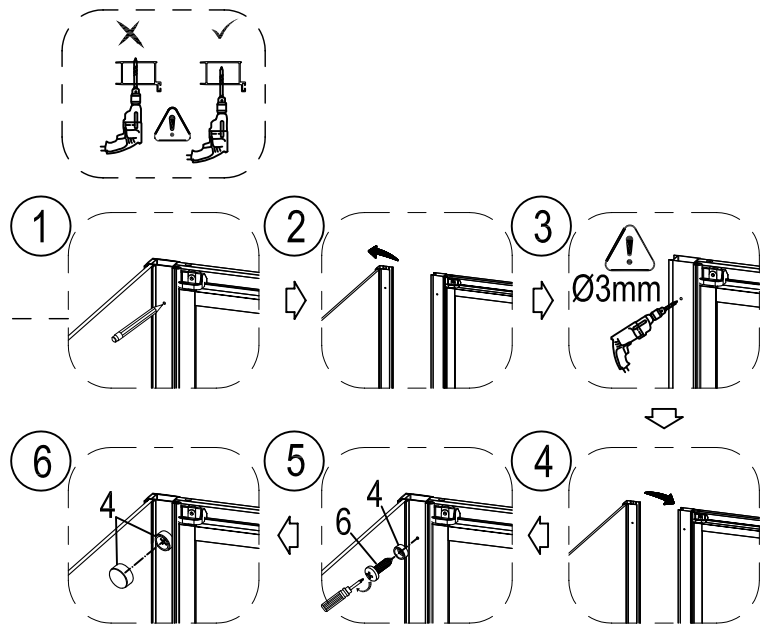
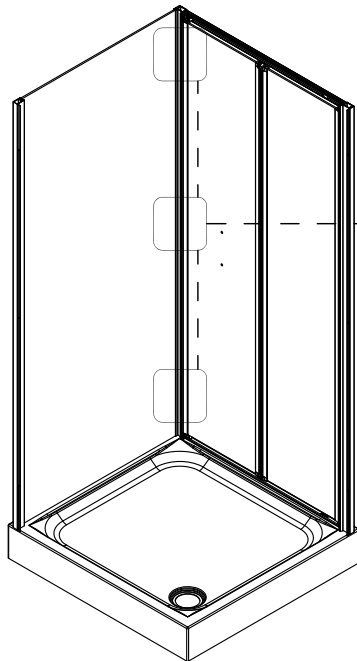
Fig.4



Assembly Instructions

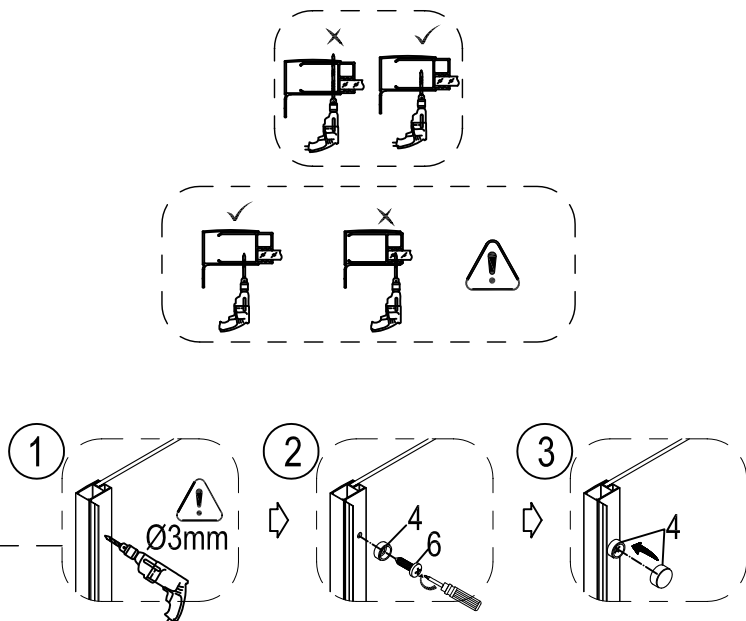
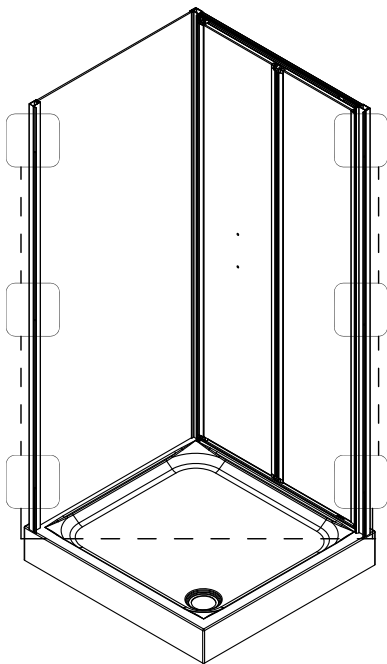
Bi-fold Door Enclosure

Fig.5



Note: First use a pencil, mark the positions through the pre-drilled screw holes on the corner profile onto the vertical profile of the bi-fold door. Next remove the side panel, and use the 3mm drill bit to drill on the vertical profile according to the marked positions. Finally insert the vertical profile of the bi-fold door into the corner profile of the side panel, and fix them with screws ST4x10 (fittings 6) and screw covers (fittings 4).

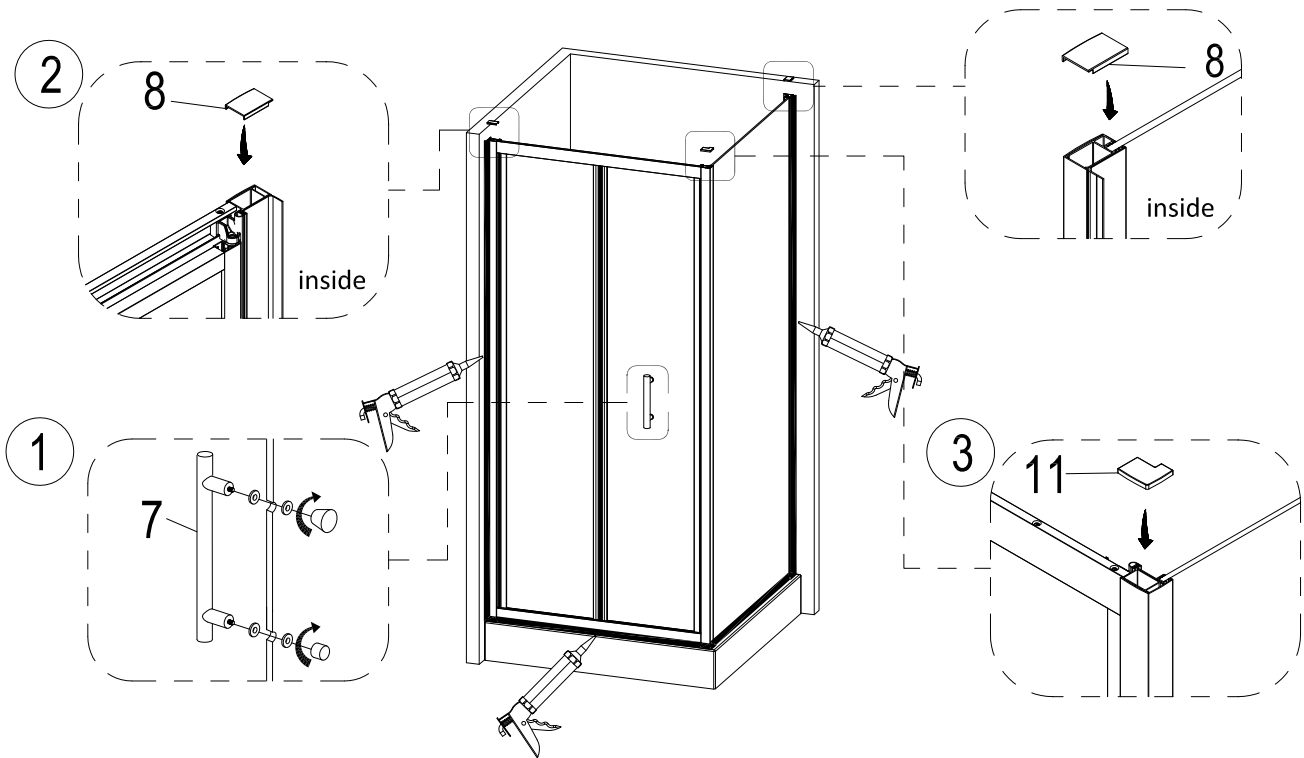
Fig.6



Assembly Instructions

Bi-fold Door Enclosure

Fig.7



Assembly Instructions

Bi-fold Door Enclosure

Care & Use

Soapy water is adequate to keep the glass clean, although glass cleaner can be used if required. Scourers, abrasives and chemical cleaners can damage the glass and pattern, and should not be used.

In hard water areas, insoluble lime salts may be deposited on the glass. If this is allowed to build up it becomes increasingly difficult to remove and looks unsightly. Regular cleaning will minimize this effect.