

# BRISTAN

## Installation Instructions & User Guide

Please leave these instructions  
with the end user

Product Code: CRU 3TH BAS Range (D2)

### Specification

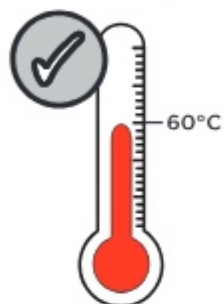
#### Dynamic Water Pressure

Min: 0.5 bar Max: 5.0 bar



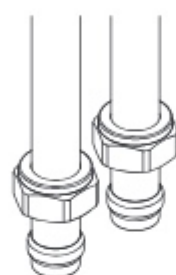
Maximum Static Pressure: 10.0 bar

#### Inlet Water Temperature



Maximum Hot: 60°C

#### Inlet Connections



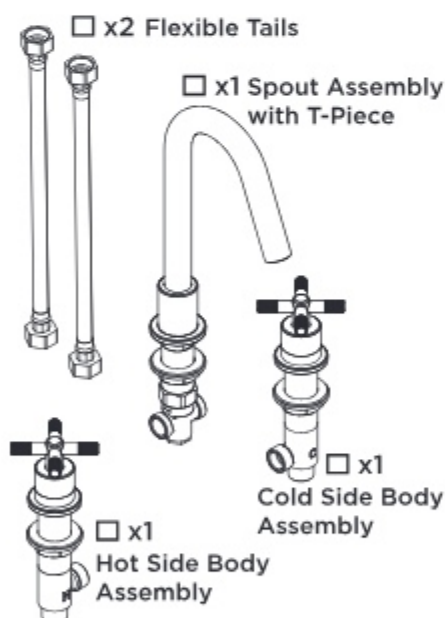
15mm Compression

#### Outlet



M18.5 5lpm  
Coin-Slot Aerator

### Pack Contents



### Operation

Hot



Cold



Spout

### Tools Required



Crosshead  
Screwdriver



Box Spanner



Socket  
Spanner



Hex Key



Adjustable  
Spanner

### Prior to Installation

All products manufactured and supplied by Bristan are safe to use provided that they are installed, operated and receive regular maintenance in accordance with these instructions.

This product needs to be installed in accordance with, and meet the requirements of The Water Supply (Water Fittings) Regulations (Northern Ireland) 2009 and The Water Supply (Water Fittings) (Scotland) Byelaws 2014.

For full Installation Requirements & Notes (IRN) please visit  
[www.wrasapprovals.co.uk/approvals-directory](http://www.wrasapprovals.co.uk/approvals-directory)

Isolation valves must be fitted to the inlet water supplies to ensure ease of future maintenance.

Before installing this product the water supply must be thoroughly flushed in order to remove any swarf, solder etc. Full access must be made available for future maintenance/servicing purposes.

This product must not be modified in any way as this will invalidate the guarantee.

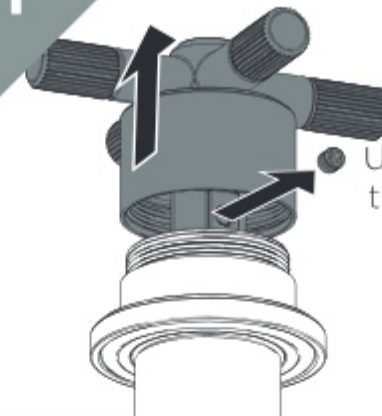
### Spare Parts



To replace any spare parts  
for your tap, scan  
the QR Code or visit  
[www.bristan.com](http://www.bristan.com) and  
search for your product.

### Installation

1



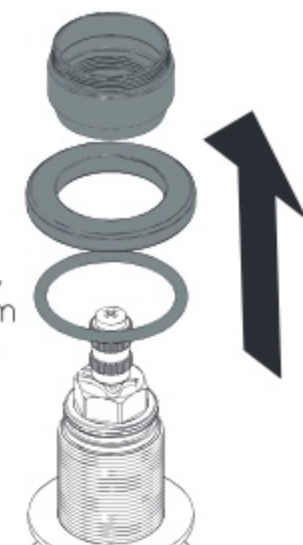
Unscrew and lift the  
shroud to reveal the  
grub screw.

Unscrew the grub screw  
then remove the handle  
and shrouds.

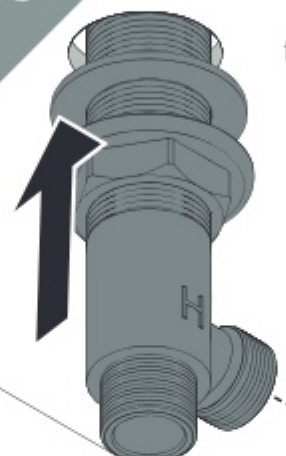


2

Remove the  
shrouds, plinths,  
and washers from  
the side bodies.



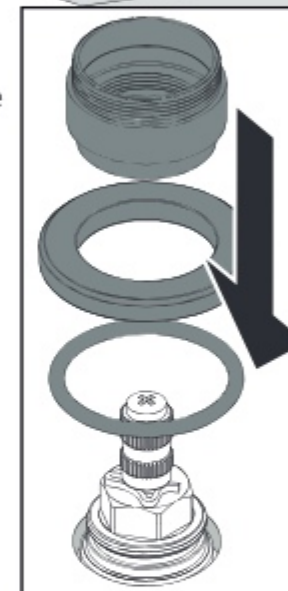
3



Feed the side bodies  
from underneath with  
the hot (H) through the  
left hole and the cold  
(C) through the right.

Ensure the angled  
connectors are facing  
towards one another.

Re-attach the shrouds, plinths and  
washers from above the basin.



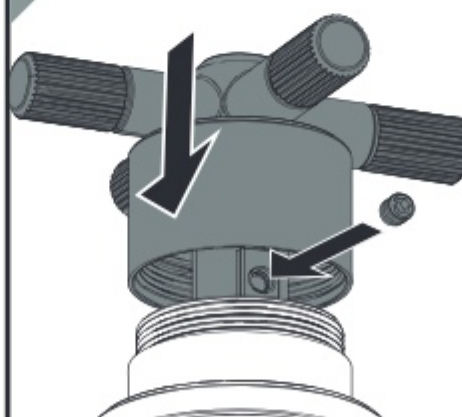
4

Secure the side  
bodies using the  
backnuts and  
washers

Rubber  
Washer  
Backnut



5



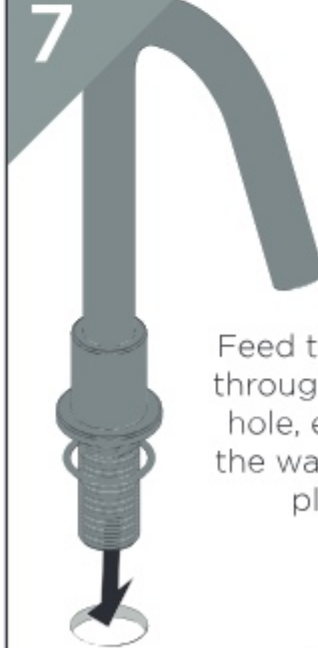
Replace the side body  
handles to secure in place.

6



Unscrew the  
T-Piece and  
washers from  
the spout thread.

7



Feed the spout  
through the tap  
hole, ensuring  
the washer is in  
place.



### 7

Secure the spout using the backnut and washers.

Fit the T-Piece onto the spout thread and tighten the nut the secure.

### 8

Connect the T-Piece to the side bodies by hand using the flexible tails.

Connect the hot and cold water supplies to the side body inlets.

**Ensure flexible tails are positioned correctly.**

### 9

**IMPORTANT**  
Turn on water supply for a few minutes and check all joints and connections for any leaks.

**Your tap is now ready for use.**

### Valve Replacement

#### 1

Unscrew and lift the shroud to reveal the grub screw.

Remove the grub screw, then the handle and shroud.

#### 2

Remove the screw and spline adaptor.

#### 3

Use a socket spanner to remove the valve.

For replacement valves, see **SPARE PARTS.**

#### 4

Reverse steps to replace the valves and handles.

### Outlet Cleaning

#### 1

Insert a coin into the slot in the outlet and twist gently to remove.

(Reverse to replace)

#### 2

Check all loose parts for damage and then soak using a suitable solution to de-scale.

Troubleshooting		
Symptom	Cause	Remedy
Low Flow	Partially closed isolation valve.	Open isolation valve.
	Airlock or partial blockage in the supply pipework.	Flush through pipework to ensure removal of debris and any airlocks.
	Partial blockage in the outlet	Remove to Clean and soak in suitable solution.
No hot water or cycling hot and cold	Instantaneous water heater cycles on and off as flow rate or pressure is too low.	Increase water flow rate or pressure through system.
No Flow	Closed isolation valve.	Open isolation valve.
	Mains water supply turned off.	Turn on mains water supply.
Temperatures not corresponding with taps	Inlet pipes have been connected incorrectly	Swap the inlet tails around.

### General Cleaning

Bristan products are made from premium materials, with hand polished, electroplated, PVD or EPD finishes.

Your taps or shower should be regularly cleaned with warm water, a mild pH-neutral liquid soap, and polished with a soft cloth. Any residues from soap, toothpaste, shampoos and shower gels can cause blemishes if not rinsed off straight after use.

Household bleaches and cleaners contain harsh chemicals and may damage the surface finish. Avoid using abrasive cloths, scouring pads, scrub sponges, steel wool or anything similar.

### Contact Us

**BRISTAN**

Part of BRISTAN GROUP

**Bristan Group Ltd.**  
**A Masco Company**

**UK:** Bristan Group,  
Pooley Hall Drive,  
Birch Coppice Business Park,  
Dordon, Tamworth  
B78 1SG.

**EU:** Masco Europe S.à.r.l.  
14 Rue Strachen  
6933 Mensdorf  
Luxembourg

**Email Us:** [enquire@bristan.com](mailto:enquire@bristan.com)  
**Website:** [www.bristan.com](http://www.bristan.com)  
**Call Us:** +44330 026 6273

### Our Guarantee

At Bristan, we want to make things as easy as possible for our customers. That's why we offer solid guarantees on all our products, effective from the date of purchase, to give you peace of mind.

Your guarantee starts from the purchase of your product, but you can still benefit from registering it for easier identification in the unlikely event of a manufacturing fault, please visit [www.bristan.com/register](http://www.bristan.com/register)

For any other queries, please call Customer Service on 0330 026 6273 where our expert team of advisors will be able to offer you any help and advice.

For full guarantee terms and conditions visit [www.bristan.com/service-centre/guarantees](http://www.bristan.com/service-centre/guarantees)